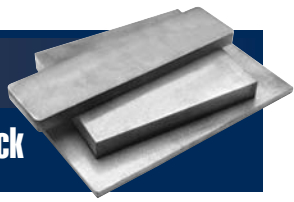


**Sintered Bronze
Oil-Impregnated**

SAE 841

Sintered Bronze Rectangular Plate Stock



Dimensions			
SYMMCO'S P/N	WIDTH	LENGTH	THICKNESS
SP-0.5 - 2.5 x 4	.50"	2.50"	.250"
SP-2 - 8.125 x 4	2.00"	8.125"	.250"
SP-2 - 8.125 x 8	2.00"	8.125"	.500"
SP-3 - 12 x 4	3.00"	12.00"	.250"
SP-3 - 12 x 8	3.00"	12.00"	.500"
SP-3 - 12 x 12	3.00"	12.00"	.750"
SP-3 - 12 x 16	3.00"	12.00"	1.000"
SP-5 - 6 x 2	5.00"	6.00"	.125"
SP-5 - 6 x 3	5.00"	6.00"	.1875"
SP-5 - 6 x 4	5.00"	6.00"	.250"
SP-5 - 6 x 6	5.00"	6.00"	.375"
SP-5 - 6 x 8	5.00"	6.00"	.500"
SP-5 - 6 x 10	5.00"	6.00"	.625"
SP-5 - 6 x 12	5.00"	6.00"	.750"
SP-5 - 6 x 16	5.00"	6.00"	1.000"
SP-5 - 8 x 2	5.00"	8.00"	.125"
SP-5 - 8 x 3	5.00"	8.00"	.1875"
SP-5 - 8 x 4	5.00"	8.00"	.250"
SP-5 - 8 x 8	5.00"	8.00"	.500"
SP-5 - 8 x 12	5.00"	8.00"	.750"
SP-5 - 8 x 16	5.00"	8.00"	1.000"
SP-6 - 12 x 2	6.00"	12.00"	.125"
SP-6 - 12 x 3	6.00"	12.00"	.1875"
SP-6 - 12 x 4	6.00"	12.00"	.250"
SP-6 - 12 x 6	6.00"	12.00"	.375"
SP-6 - 12 x 8	6.00"	12.00"	.500"
SP-6 - 12 x 10	6.00"	12.00"	.625"
SP-6 - 12 x 12	6.00"	12.00"	.750"
SP-6 - 12 x 16	6.00"	12.00"	1.000"

Plate stock will finish to sizes shown. Thickness tolerance is (+) plus .010, (-) minus .005.

If you do not see exactly what you need, please contact our sales department.